

LETTER TO SELF:

Self,

This letter is to you, from you. I hope you have been busy rebuilding your life. The main thing I want you to do for me right now is remember. Remember the things you learned at Alpha 2 about getting your life into a sense of balance in order to maintain. Remember how they showed you that there are good people in the world, and how to tell them from the others. Remember, who was the first person you met in over seven years that was kind to you just because she's a kind person? Remember how it felt when Sarah apologized for being mean to you one day. It wasn't a big deal to her, but how profound was it to you? Most of all, remember the day you wrote this letter, and how you felt writing it. Who was it that let you down that day in a really big way? The balance you need in your life won't come from people who let you down. It won't even come from people who never let you down. It will only come from within your self; from your own hard work, and continuing effort. But don't let yourself fall into your usual trap of loving what tears you down. Find love in what builds you up.

Good Luck,

Self

LETTER TO FUTURE CLIENTS:

I find myself here at Alpha 2. Knowing I'm going home I'm going to miss everyone here. I'm not just saying that to be saying it. I really am going to miss them.

My counselor is a kind and understanding lady. This place has done a lot for me and it gave me hope when I was sad and love when I was lost. It found a way to reach my heart and help fix what was broken. It made me understand I can never go back to the way I was. It showed me how to really live.

For all of you that are here now, take from it what you can. The time is short so don't waste it. Life is too good to pass up this chance. Don't blow it. Let it into your heart. You will be disappointed if you don't!

As for me, I won't lie to you and say I'll never drink again but I can say, not today. I take it one day at a time.

Signed,

Just Like You

ALPHA II, INC.
P.O. BOX 369
1608 N. MAIN
TONKAWA, OK 74653
PH: 580-628-2539
FAX: 580-628-4316

ALPHA II, INC.

2009 ANNUAL REPORT

JULY 1, 2008—JUNE 30, 2009

www.alphatwo.org

FINANCIALS

2008/2009 BOARD OF DIRECTORS

Jason Johnson, President
 Igor Vysotsky, Vice President
 Kirk Henderson, Treasurer
 Rich Cantillion, Secretary
 Rick Edgington
 Marcie Roth
 Jim Schreen

2008/2009 A2 FOUNDATION

Glenn Scott, President
 Janine Roth, Vice President &
 Secretary
 Suzie Greenwood, Treasurer

STAFF

Kari Scott, Executive Director
 Ashley Smith, Marketing Coordinator
 Gary Yates, LADC
 Sarah Pollet, Case Manager
 Sonya Hartwig, Intake &
 Administrative Specialist
 Russell VanSchuyver, Facility Manager,
 Health & Safety Officer
 J.R. Walker, House Manager (22 years)
 Joe Bolt, House Manager
 Russ Burger, House Manager
 Josh Coleman, House Manger

	<u>2009</u> <u>(No DOC)</u>	<u>2008</u> <u>(DOC)</u>	<u>2007</u> <u>(DOC)</u>
-Contract Revenue	\$321,700	\$613,536	\$640,134
-Program Fees	\$30,000	\$20,722	\$0
-United Way/ Donations	\$1500	\$2750	\$95
-Other Revenue/ Savings	\$123,081*	\$14,821	\$53,303
Total Revenue	\$476,281	\$651,829	\$693,532
Payroll	\$263,877	\$394,953	\$425,997
Deprecia- tion	\$28,000**	\$42,517	\$38,210
Operating	\$219,810	\$201,227	\$234,957
Repairs & Mainte- nance	\$9,914	\$26,772	\$24,875
Total Cost	\$521,601	\$665,469	\$724,039
Net Income/ Loss	(\$45,320)	(\$13,640)	(\$30,507)

*Alpha II, Inc. relied heavily on Savings and CD's for FY09.

**Un-audited Depreciation.

Success is to be measured not so much by the position that one has reached in life as by the obstacles which he has overcome.

-Booker T. Washington

www.alphatwo.org



A SUBSTANCE ABUSE TREATMENT CENTER

MISSION

The mission of Alpha II, Inc. is to promote the quality of life and emotional well being of Oklahoma by advocating, encouraging and exemplifying the barrier free delivery of responsive and innovative community-based substance abuse services in an environment of dignity and respect for all consumers, their families, and our staff.

www.alphatwo.org

INTRODUCTION

FREQUENCY OF USE:

July 1, 2009

To the Board of Directors & Stakeholders of Alpha II, Inc:

This year marked the first full year that Alpha II operated strictly as a Substance Abuse facility for the state of Oklahoma. The ability to focus on our mission, provide person centered services, and dedicate our facility to a male residential program resulted in 108 persons served, increased employee morale and increased community visibility.

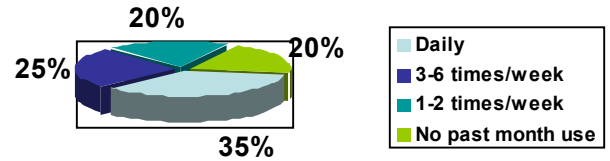
While we continue to seek opportunities to partner with monetary contributors, our in-kind donation loft is over-flowing. And at a year old, the A2 Foundation saw capital donations double over 2009 with several new contacts made through fund raising events and presentations. Equally exciting, Alpha II will maintain it's CARF accreditation and United Way partnership through 2010.

Alpha II is not sheltered from the economic challenges facing our state, but we must never lose sight of the clients we serve. It is truly an honor to change lives everyday for the betterment of our fellow Oklahomans. The clients we serve are easing the burden on Oklahoma financially through reduced health care costs, lower rates of unemployment, and higher employee attendance rates for employers.

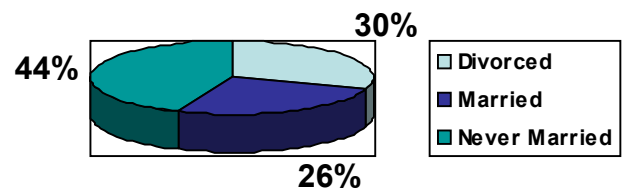
Each day brings new opportunities to learn and grow for ourselves and those around us. I look forward to another year of quality services and programs for the recovery of our husbands, fathers, grandfathers, brothers, sons, uncles, nephews and friends.

Respectfully,

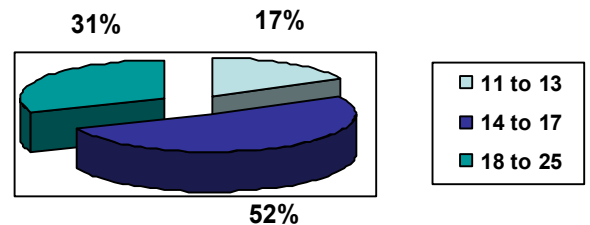
Kari L. Scott,
Executive Director



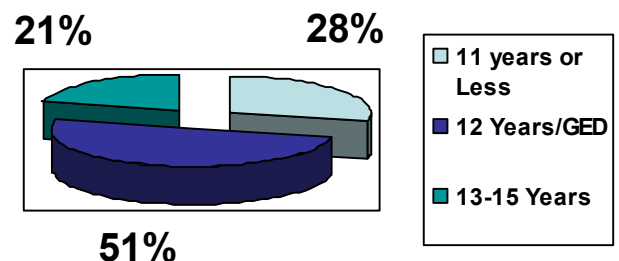
MARITAL STATUS:



AGE OF FIRST USE:

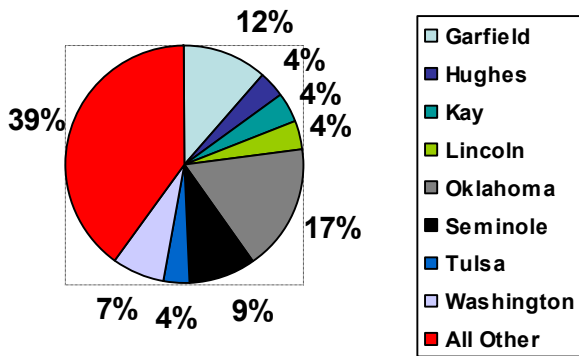


EDUCATION LEVEL:

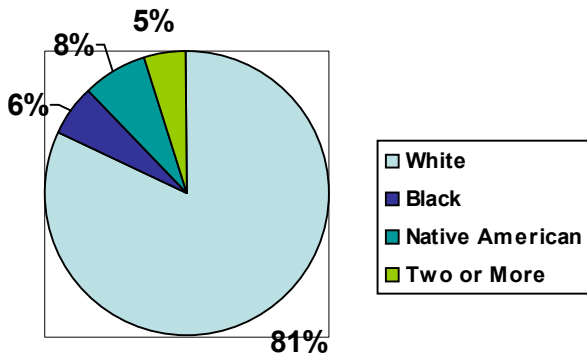


DEMOGRAPHICS

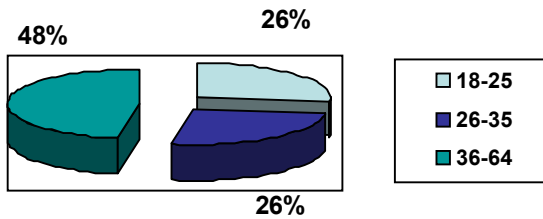
COUNTY OF RESIDENCE:



RACE:



AGE CATEGORIES:



Helping
Other
People
Everyday

Performance Management Report

Measure

Measure	Planned	Actual	
		2007-2008	2008-2009
In-creased Level of Functioning (1 pt)	65.8	67.9	
	<u>State</u>	<u>2007-2008</u>	<u>2008-2009</u>
	72.1	78.6	75.7
In-creased Level of Functioning(5 pt)	62.0	72.6	72.9
Arrest Reduction	76.8	69.2	85.7
Substance Use Reduction	70.0	68.6	87.7
Unemployment Reduction	5.4	8.1	11.8
30 Day Tenure	96.9	97.6	99.1
90 Day Tenure	93.7	96.4	97.2

Strategic Plan Cont.

recruit certified or licensed counselors. With current economic trends, Alpha II, Inc. maintained average or slightly below average pay for it's staff. Alpha II eliminated one professional and one staff position in order to ease budget strain.

*Facility has maintained its home-like atmosphere and conducts weekly walk-through's to ensure client comfort and safety. Due to budget restraints, no significant upgrades were made in FY 09, however, the A2 Foundation continues to successfully raise funds for a new dormitory.

*Technological resources maintained their function through FY 09. In addition the state streamlined their survey and database measures for easier access to state funded facilities. This resulted in immediate access to quarterly measures.

*Alpha II staff work daily to maintain standards for ODMHSAS Certification and CARF Accreditation. The implementation of a State Field Representative and Contract Supervision has allowed for additional file audits and quality assurance measures to remain up to date.

CLIENT COMMENTS:

- "I was glad to know that violent people were not admitted here."
- "The counseling staff have so much understanding and patience that blew my mind. I can see they really care."
- "Alpha 2 changed my life and maybe even saved it."
- "The food was good. I gained 20 pounds."
- "I was always treated with respect."
- "The films are out-dated."
- "I learned a lot about myself and how to stay clean and sober."
- "The staff always got answers for my questions. They really care."
- I would like to thank Alpha 2 for helping me find myself."

⇔	Efficiency	<p>*Client to staff ratio remains below state standards. *Wait time continues to decrease as referral networks increase. *One professional staff position was eliminated to assist in financial management.</p>
⇔	Quality Assurance	<p>*Client files are audited quarterly by dual staff and reviewed monthly in Leadership meetings. *Establishment of a state Field Representative to assist in state compliance. *Contract supervision available to assist in file audits and quality reviews.</p>
↑	Client Surveys	<p>*State surveys show that client satisfaction increased to 100 percent in 2009 and clients would refer their friends and family. *Internal surveys are being used to enhance the program and mission of the organization. *Monthly updates on client comments are being reported at staff and Board of Director meetings.</p>
⇔	Strategic Plan	<p>*Alpha II conducted drug screenings and victim's impact panels for outside agencies and doubled it's awareness in 2009 through presentations to community groups, National Night Out, Relay for Life, and the Crystal Darkness Campaign.</p> <p>*Alpha II continues to rely heavily on the state contract, but is beginning to make progress in community relationships and potential funding sources. Alpha II also established an online donation option with NetworkForGood.</p> <p>*Alpha II saw significant turnover in professional staff in 2009. Rural Oklahoma remains a difficult location to</p>

ODMHSAS Customer Survey

<u>Measure</u>	t		96.0
Access	<u>State</u>	<u>2007-2008</u>	
	90.1	90.0	<u>2008-2009</u>
Outcome			100.0
	91.7		
Quality		96.0	
	94.1		100.0
Satisfaction		96.0	
	86.3		100.0
		80.0	
Treatment Involvement			100.0
	86.2		

**Alpha II, Inc.
ranks 1 out of 34
in Customer Survey
Measures!**

**Alpha II, Inc.
ranks in the top 11
in all other
Measures!**

Executive Summary

↑	Indicates improvement over last year or over an established baseline.
↓	Indicates decline in performance outcomes.
↔	Indicates either process/outcome stability. No change from previous reporting period.

Symbol	Area of Performance	Comments
↔	Financial Information	*Private Pay clients increased from 0 to 6 in FY09. *Monthly statements continue to be billed to past clients. *Residential treatment in Oklahoma is not eligible for Medicare or Medicaid and most clients are uninsured.
↑	Risk Management	<u>Internal Risk:</u> *Annual Training has been implemented to include Release of Information, Duty to Warn, Confidentiality, HIPAA. In addition a New Employee Handbook was developed to include all training measures.
↔		<u>External Risks:</u> *Availability of CADC and LADC candidates in our area remains low. *Funding Interruption is a huge concern with the state of the economy in 2009.
↔	Human Resources	*Saw a decrease in Health premiums due to low claims. *4 of 5 Professional staff members hold Bachelor Degrees or higher. *Significant turnover in professional staff in 2009 created a new dynamic and fresh outlook for Alpha II programs.
↑	Marketing	*Hosted fundraising events for the A2 Foundation's capital campaign. *Established a monthly newsletter. *Brand

↑	Marketing	Awareness increased through press releases, community outreach, and speaking engagements. *Continued use of the website as an effective communication tool for staff, clients, and community; addition of online donation tool.
↑	Health & Safety	*Implementation of annual staff training, weekly client training, and bi-monthly committee trainings on Infection Control. *CIR's remain low. *Established relationship with a variety of local law enforcement to ensure access to drug dog searches as needed. *Eliminated tobacco on campus.
↑	Accessibility Planning	*Removed excess furniture and partitions to create more recreational space for clients. *Community support increased through in-kind donations, local mission projects, victim's impact panels, and hosting area leadership organizations. *Increased all client survey measures.
↑	Access To Services	*Updated Client screening form. *Implemented quarterly mailers to state judges, DAs, Drug Courts, hospitals, and Detox centers resulting in increased referrals to and from the facility.
↑	Effectiveness	*Program continues to remain at or near the top in every measurable category as compared to other state agencies. *Drug Court Referrals have doubled in the last year. *Established relationship with local Technology center to enhance client life skills and employment stability. *Ranked number one in all state customer survey measures. *Reduced number of arrests, unemployment, and substance use.